



### Présentation clinique habituelle

Fièvre d'installation brutale associée à des douleurs diffuses, une asthénie intense et une toux sèche

### Principales sources d'infection

Sécrétions respiratoires  
Mains contaminées par sécrétions au contact des muqueuses

### Particularités

Risque d'épidémie. Formes graves chez les personnes fragiles. Risque de surinfections (pneumopathies bactériennes...)

# Grippe

### Présentation clinique habituelle

Lésions érythémateuses puis vésiculeuses unilatérales sur le trajet d'une racine nerveuse

### Principales sources d'infection

Vésicules cutanées

### Particularités

Rechercher des facteurs de stress  
Risque de varicelle pour les personnes non immunisées  
Formes généralisées chez les immunodéprimés

# Zona

### Présentation clinique habituelle

Pneumopathie sévère de début brutal avec fièvre élevée, signes digestifs. Fièvre isolée

### Principales sources d'infection

Inhalation de microgouttelettes d'eau contaminée

### Particularités

Pas de transmission interhumaine  
Formes sévères avec troubles de la conscience, formes avec cytolyse hépatique.

Maladie à déclaration obligatoire

# Legionellose

### Présentation clinique habituelle

Diarrhée aiguë avec ou non vomissements et douleurs abdominales

### Principales sources d'infection

Selles et vomissements, eau et aliments contaminés

### Particularités

Risque d'épidémie : alimentaire (**TIAC**) à déclaration obligatoire) ou transmission croisée (**GEA**).  
Formes graves avec déshydratation (dysenterie). Formes septicémiques

# Diarrhée infectieuse

### Infection à SARS-Cov

### Présentation clinique habituelle

Infection respiratoire aiguë (fatigue, fièvre, douleurs musculaires, toux, difficultés respiratoires, anosmie...)

### Principales sources d'infection

Sécrétions des voies aériennes  
Mains contaminées par sécrétions au contact des muqueuses

### Particularités

Risque Pandémique. Formes graves chez les personnes fragiles. Risque de surinfections (pneumopathies bactériennes...)

# Coronavirus

### Présentation clinique habituelle Infections, colonisations

les Bactéries Multi-Résistantes aux antibiotiques sans signes cliniques pouvant intéresser de nombreux sites (pneumopathies, bactériémies, infections urinaires, infections osseuses, méningites...)

Principales BMR	Réservoir
Entérobactéries productrices de bêta-lactamase à spectre étendu (EBLSE)	Tube digestif
Staphylocoque doré multi-résistant (SARM)	Peau et nez

### Voies de transmission

Mains, excréta, matériel, surface en contact avec les mains, sanitaires

### Particularités

Risque d'épidémie

# BMIR

### Présentations clinique habituelle Infections, colonisations

les Bactéries Hautement Résistantes aux antibiotiques émergentes sans signes cliniques peuvent se retrouver dans de nombreux sites (pneumopathies, bactériémies, infections urinaires, infections osseuses, méningites...)

Principales BMR	Réservoir
Entérobactéries productrices de carbapénémases (EPC)	Tube digestif
Enterococcus faecium résistants aux glycopeptides (ERG)	Tube digestif

### Voies de transmission

Mains, excréta, matériel, surface en contact avec les mains, sanitaires

### Particularités

Risque d'épidémie. Difficulté de traiter les infections

# BIHRe

### Présentation clinique habituelle

Diarrhée aiguë (> 3 selles liquides /jour).  
Colite pseudomembraneuse : diarrhée liquide, abondante (supérieure à sept selles par jour) faite de selles hétérogènes en général non sanglante

### Principales sources d'infection

Selles. Post antibiothérapie

### Particularités

Pathogénicité due à la production des toxines A et B. Portage asymptomatique souvent souches non toxigènes.  
Résistance des spores dans l'environnement, au PHA et aux produits d'entretien habituels

# Infection à Clostridioides



**Présentation clinique habituelle**

Lésions cutanées très prurigineuses siégeant principalement sur les faces latérales des doigts, les poignets, les coudes.

**Principales sources d'infection**

Sarcoptes scabiei hominis

**Particularités**

Prurit isolé. Gale norvégienne : lésions très importantes, hyperkératosiques, chez les malades immunodéprimés.

**Gale****Présentation clinique habituelle**

Inflammation conjonctivale aiguë d'évolution bénigne.

**Principales sources d'infection**

Nombreux virus dont : Adénovirus, Virus herpès simplex, Entérovirus.

Nombreuses autres bactéries.

**Particularités**

Atteinte simultanée possible de la cornée (kératite) au cours d'infections virales.

**Conjonctivite****Présentation clinique habituelle**

Toux + signes généraux : fièvre, céphalée, sueur, arthralgies, altération brutale de l'état mental ou d'autonomie et signe fonctionnel ou physique : dyspnée, douleur thoracique, sifflement, signe auscultatoire.

**Principales sources d'infection**

Virus hivernaux, Adénovirus, Cytomégalovirus, Myxovirus influenzae, virus parainfluenzae, virus respiratoire syncytial et bactéries...

**Particularités**

TROD, risque d'épidémie

**IRA**





**Répondre à  
une sonnette**



**Tour de  
change hors  
toilette**



**Entretien de  
la chambre,  
sanitaires**



**Toilette au  
lit**



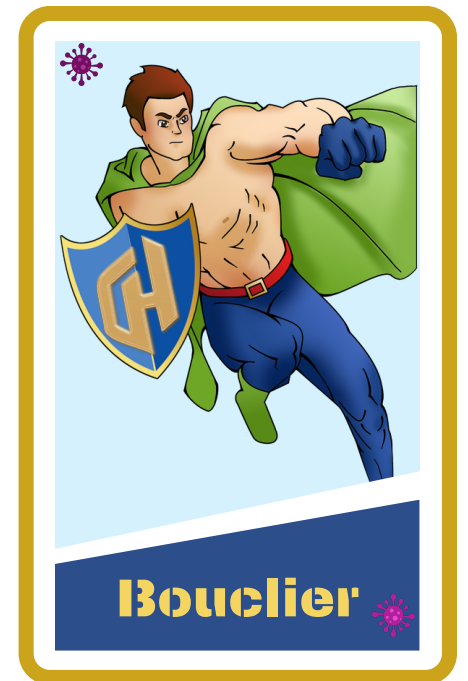
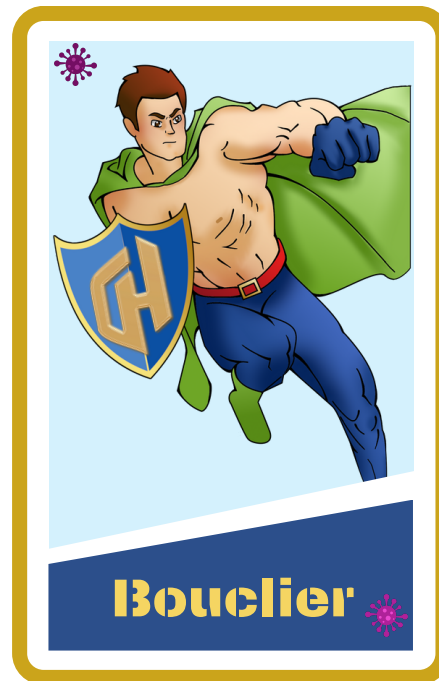
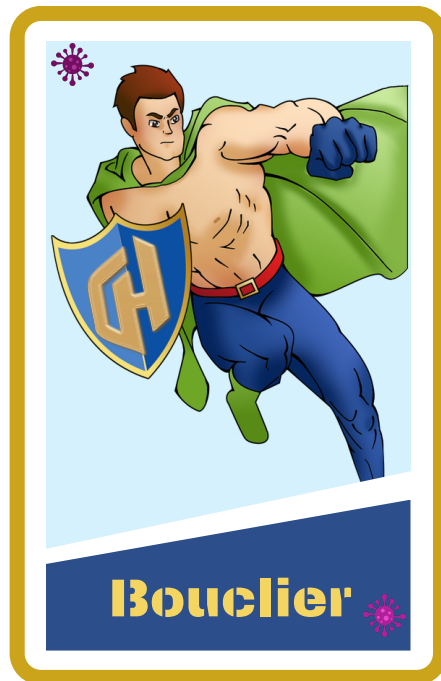
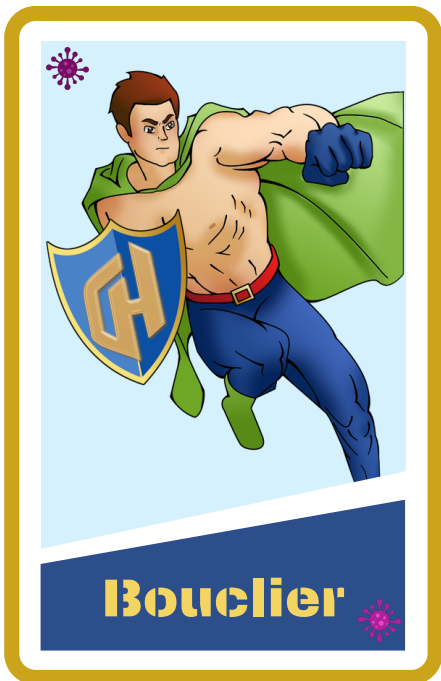
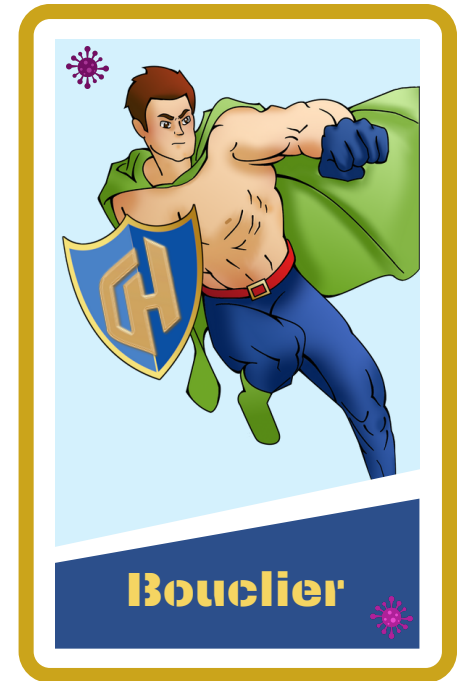
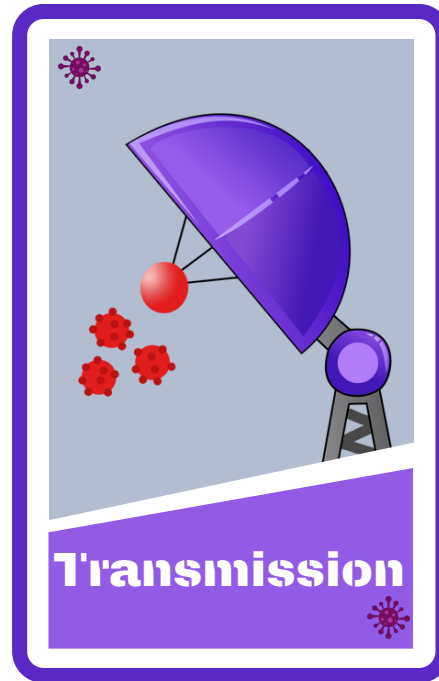
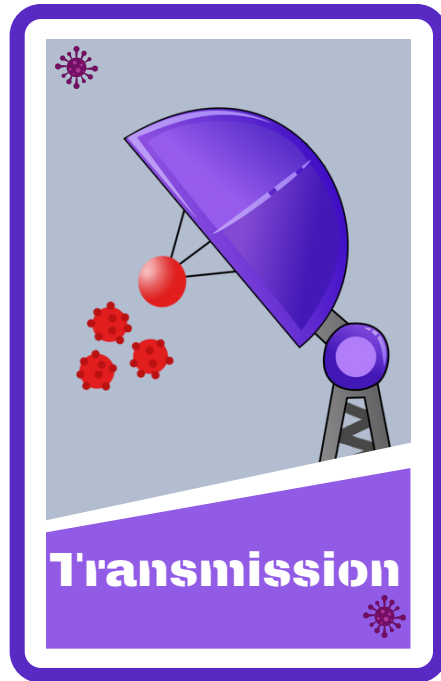
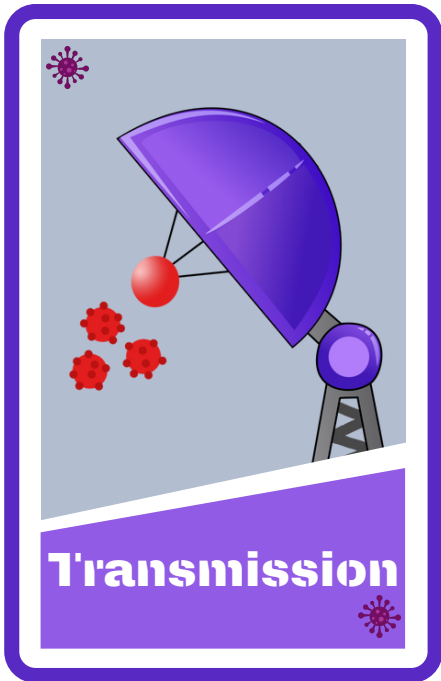
**Gestion des  
excreta d'une  
chaise percée**



**Gestion du  
linge**

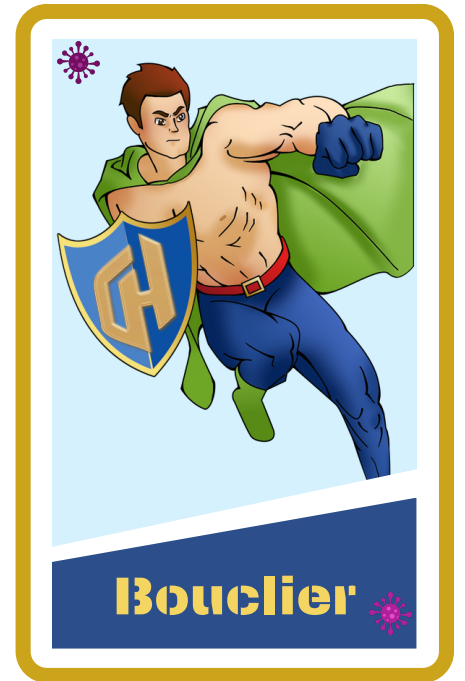
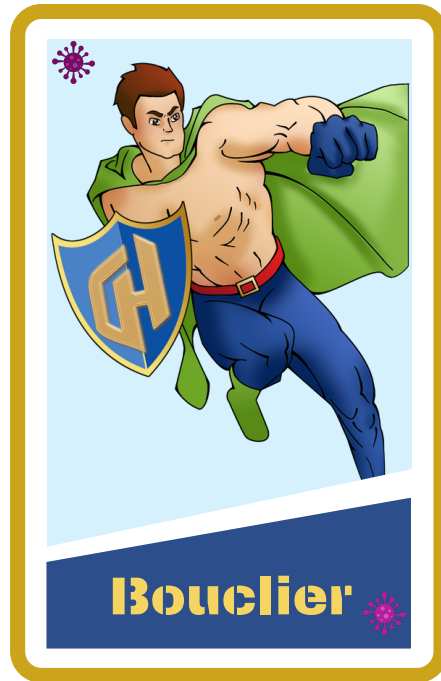
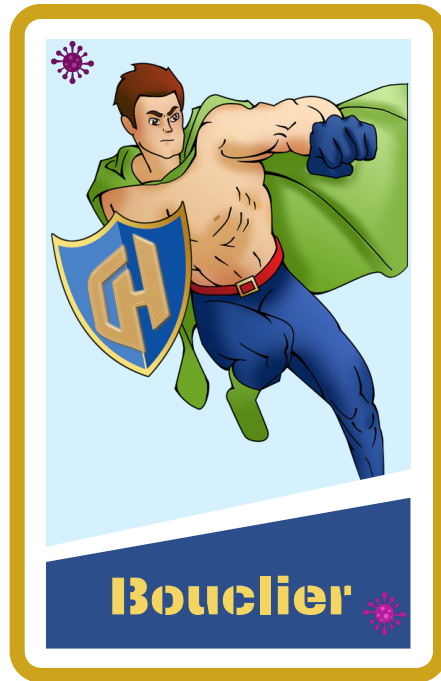
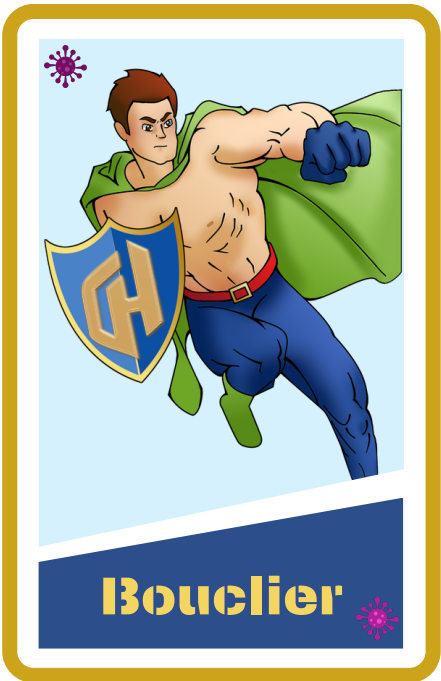
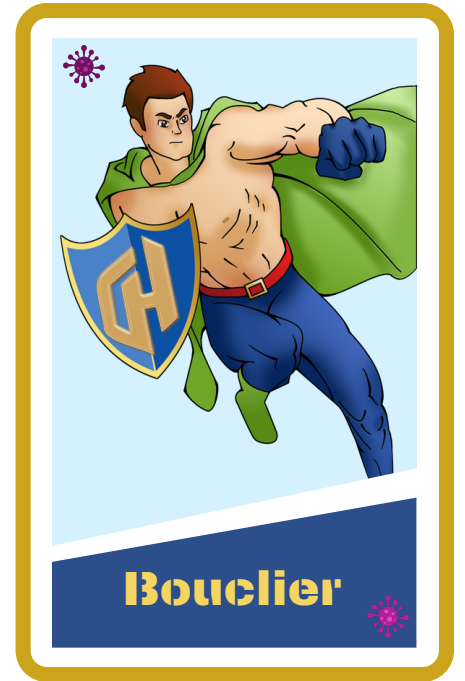
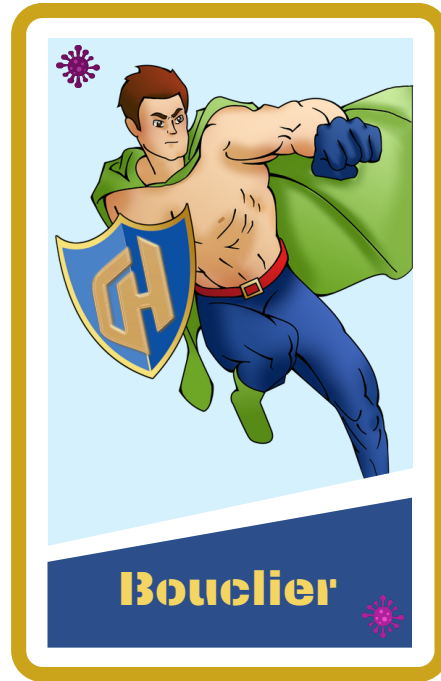
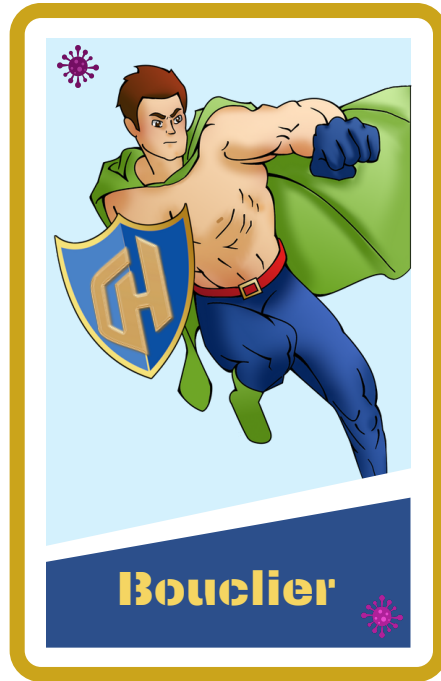
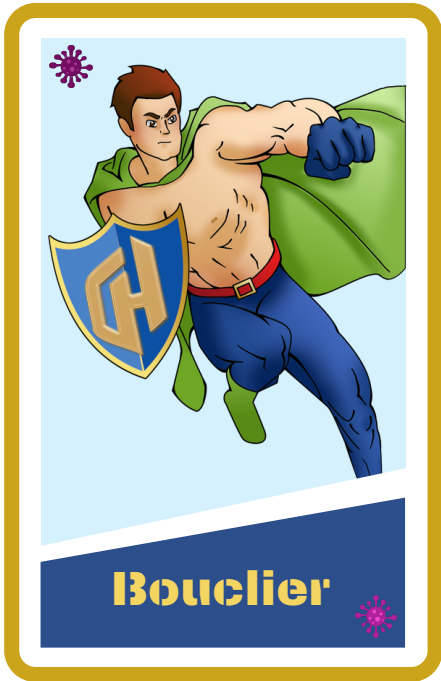


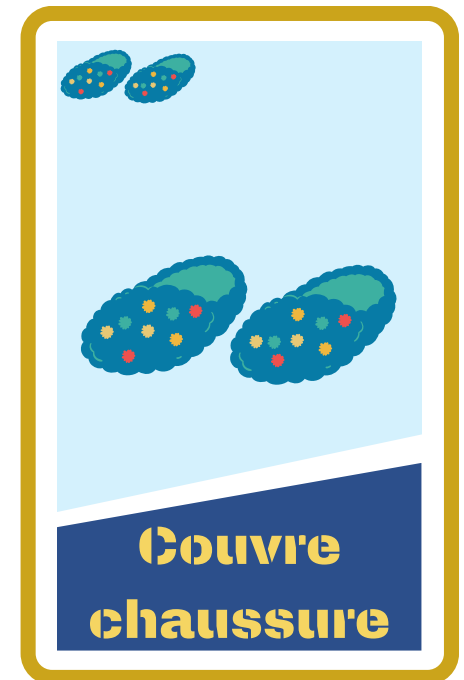
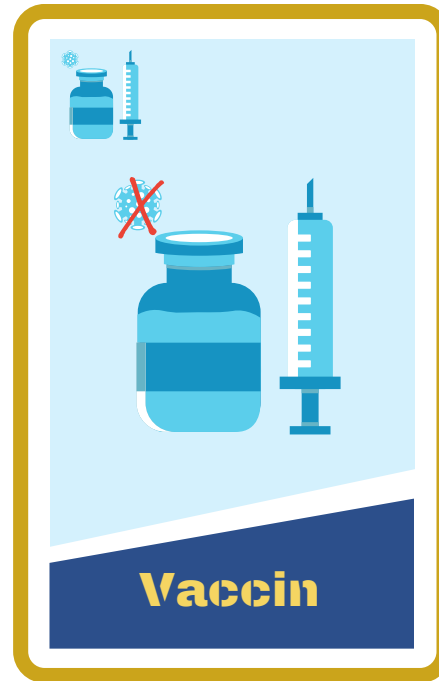
**Soins de  
bouche**

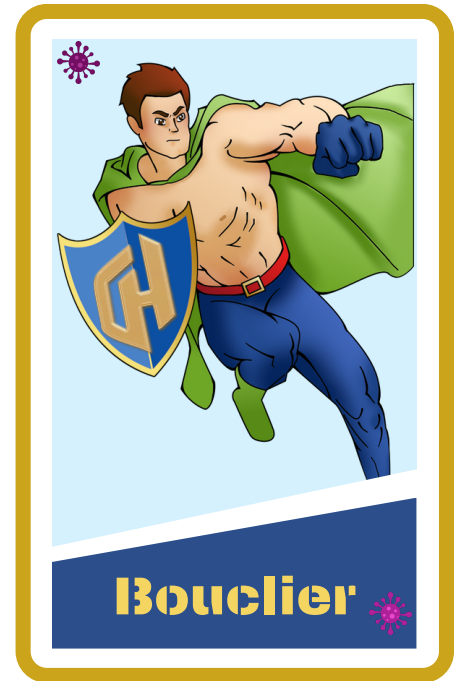
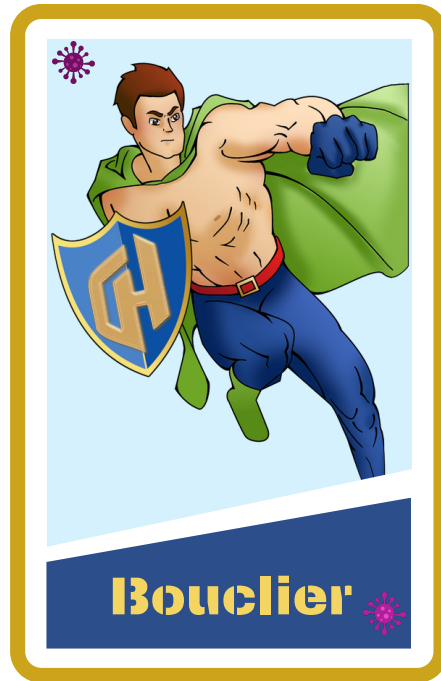
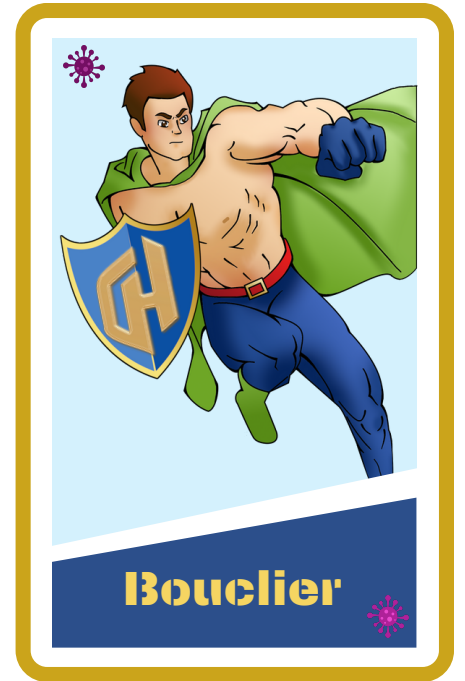
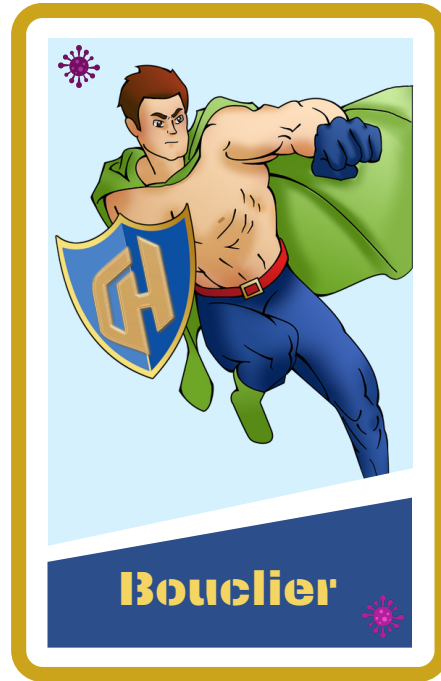
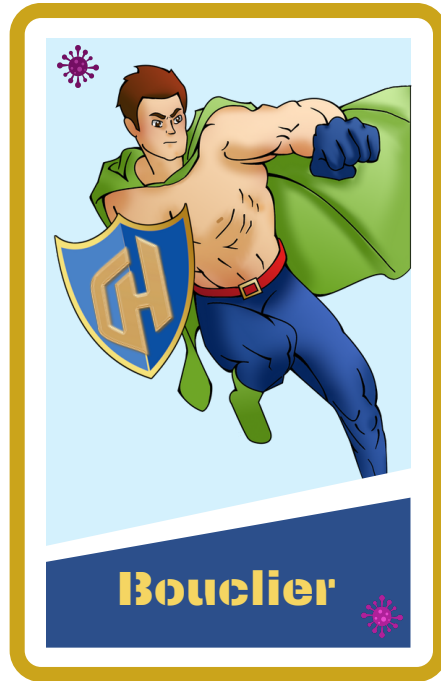
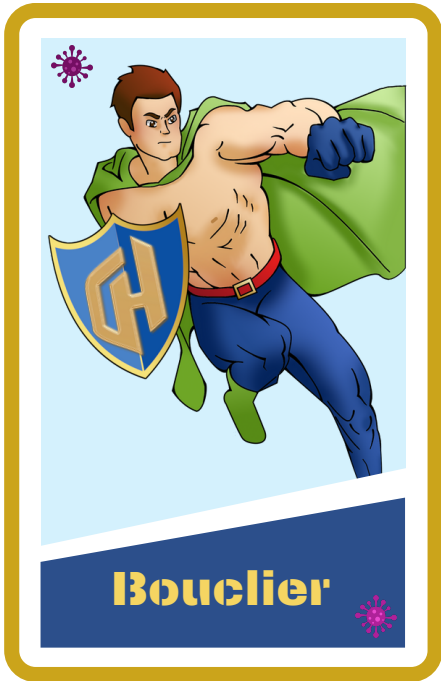


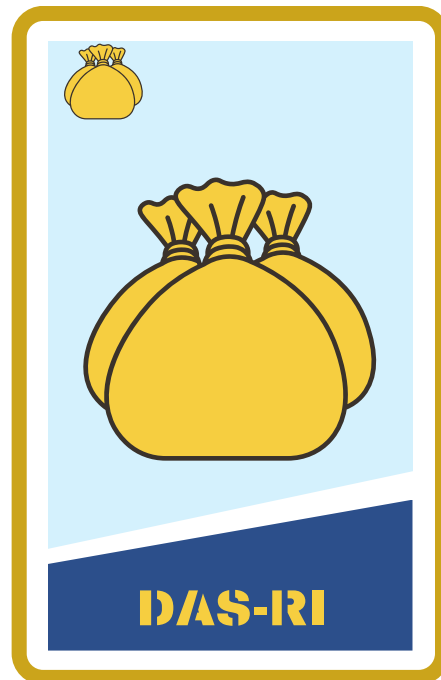


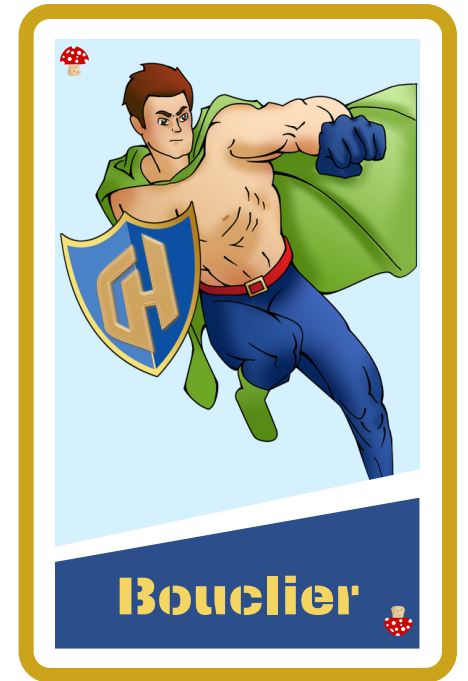
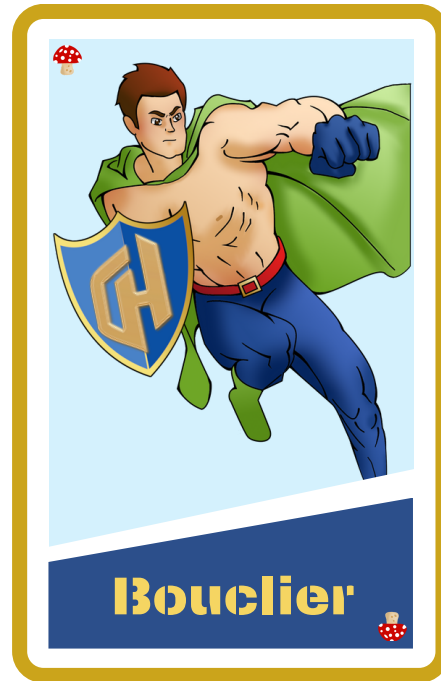
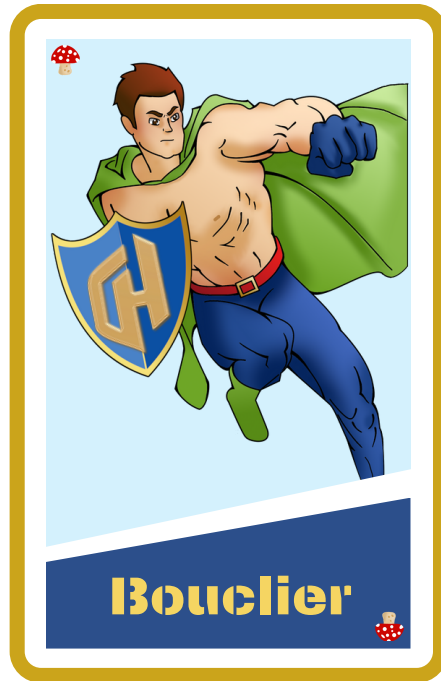
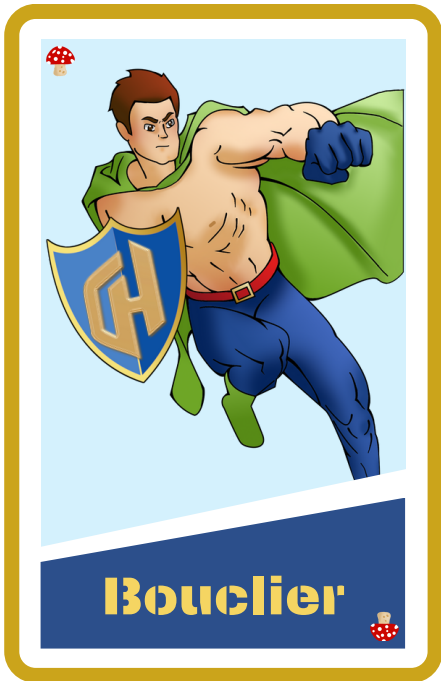
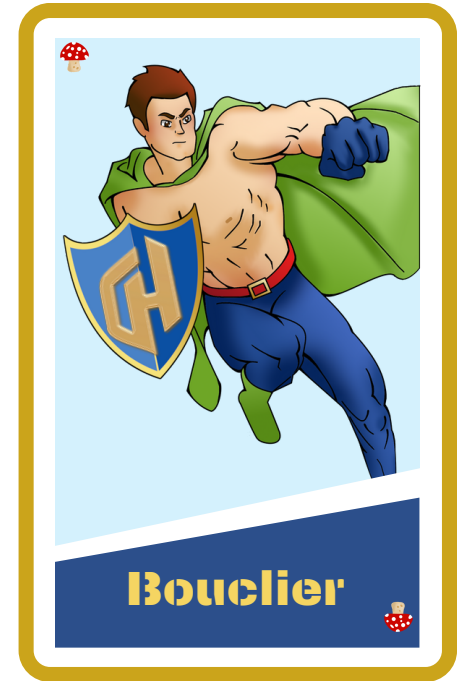
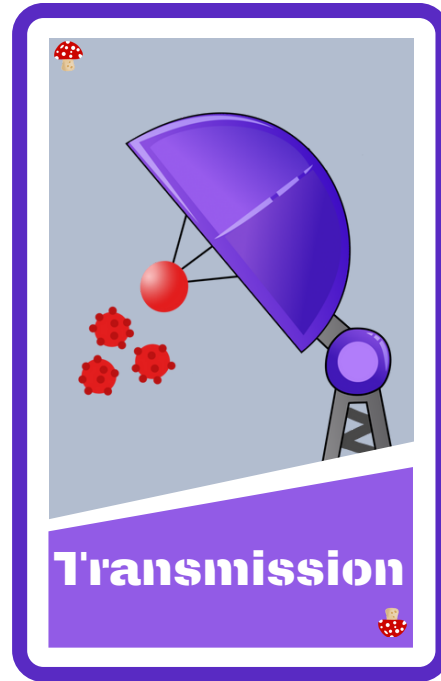
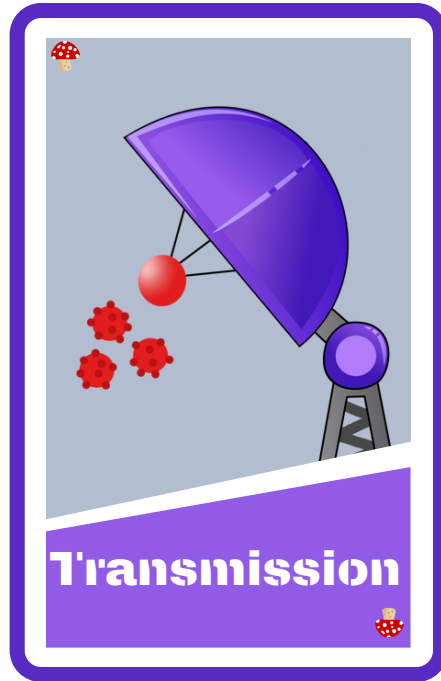
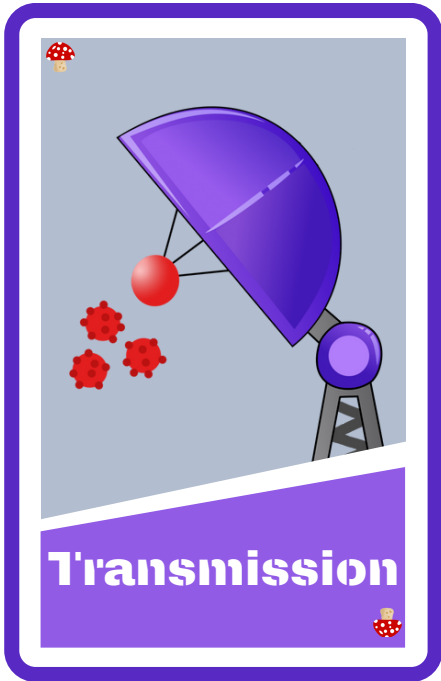


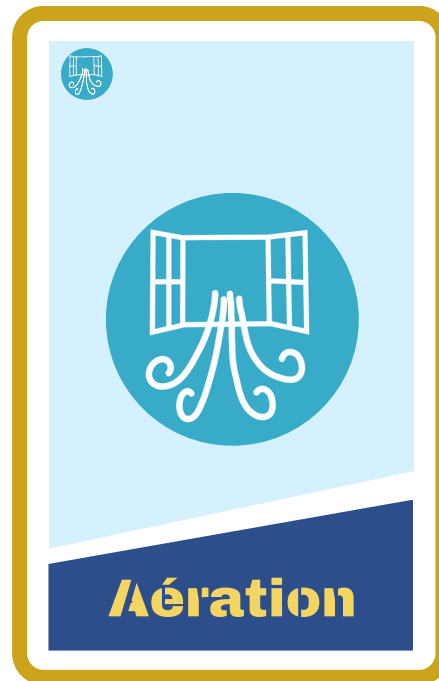


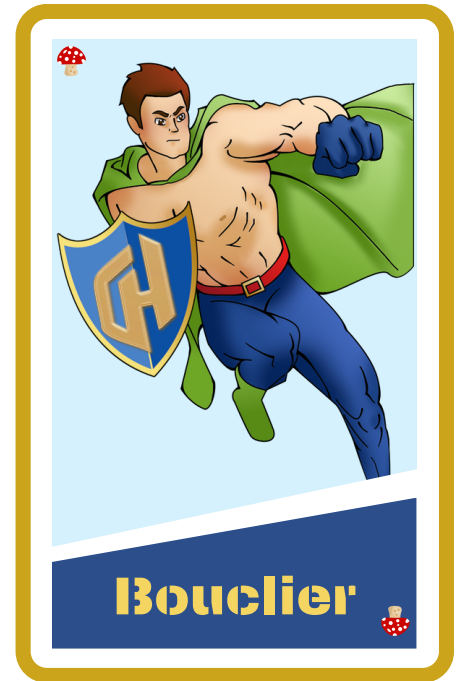
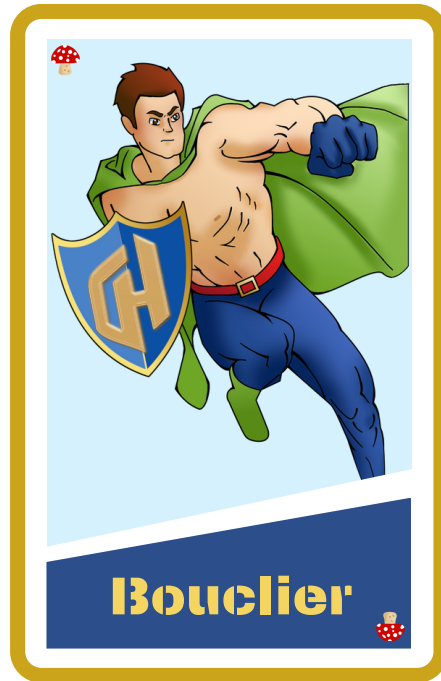
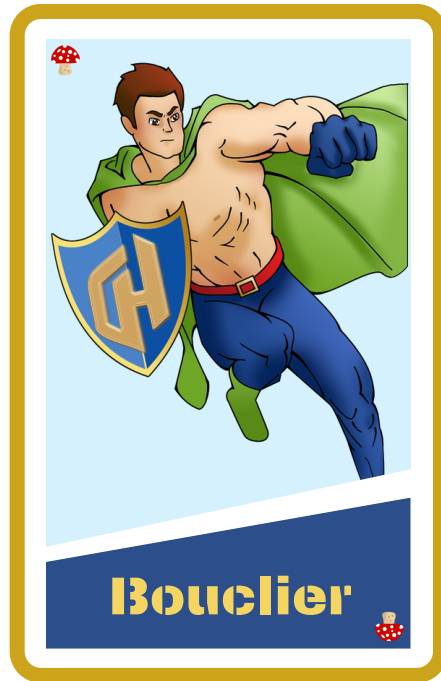
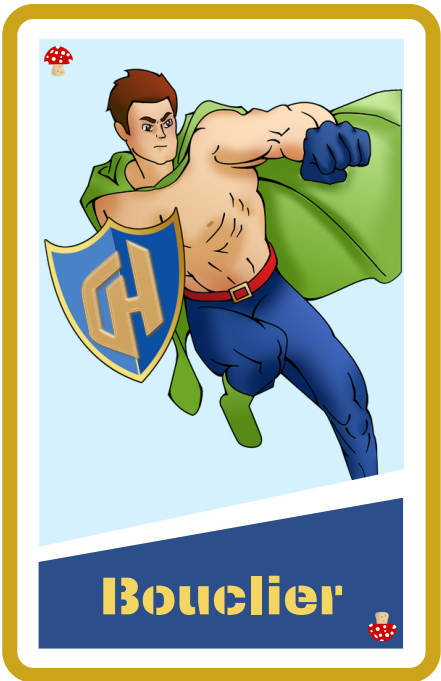
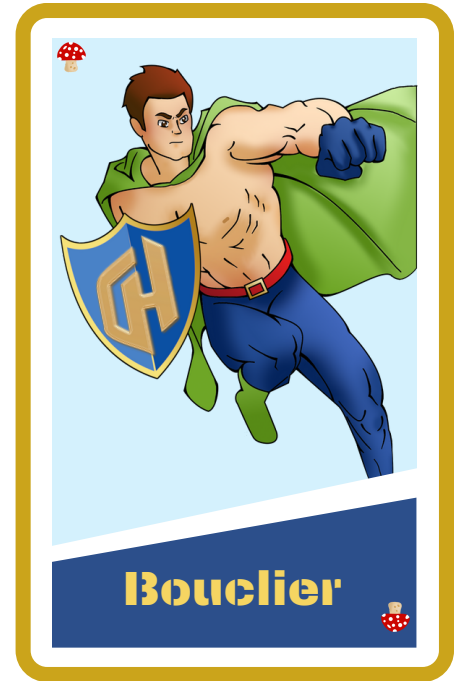
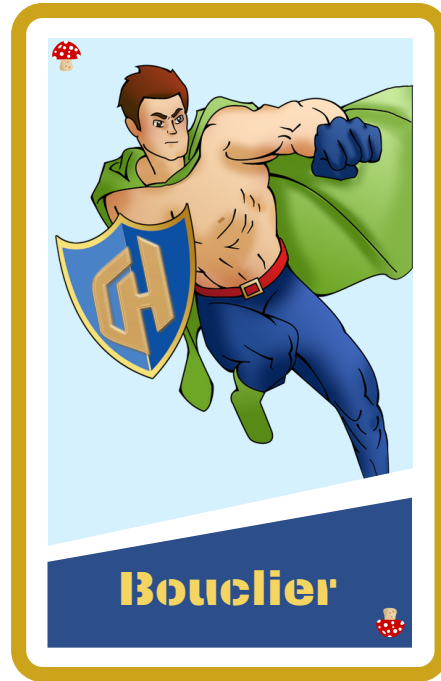
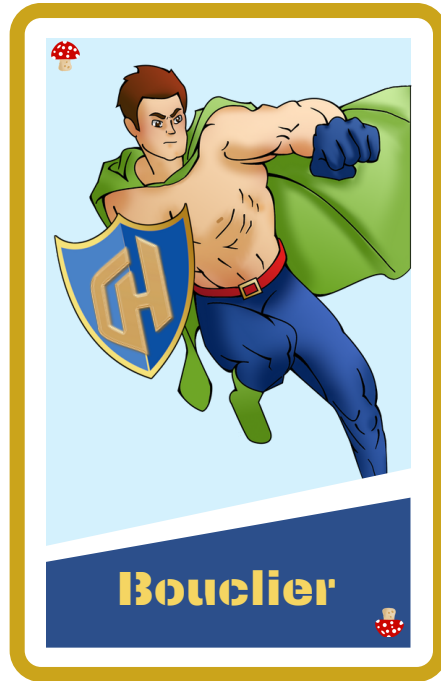
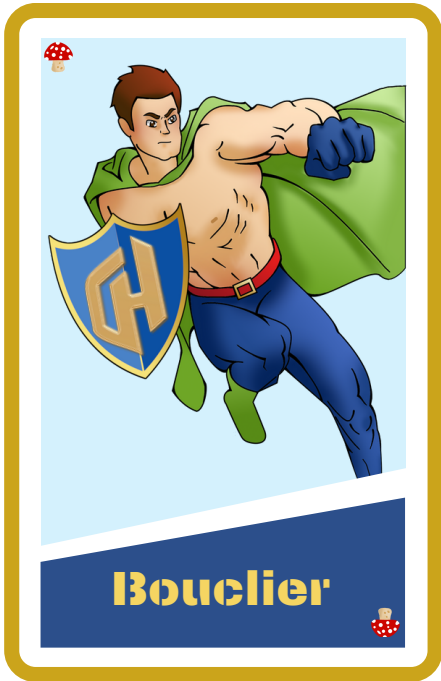


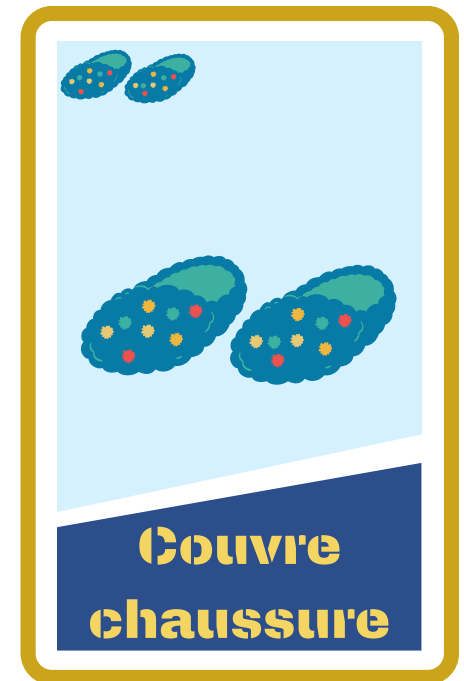
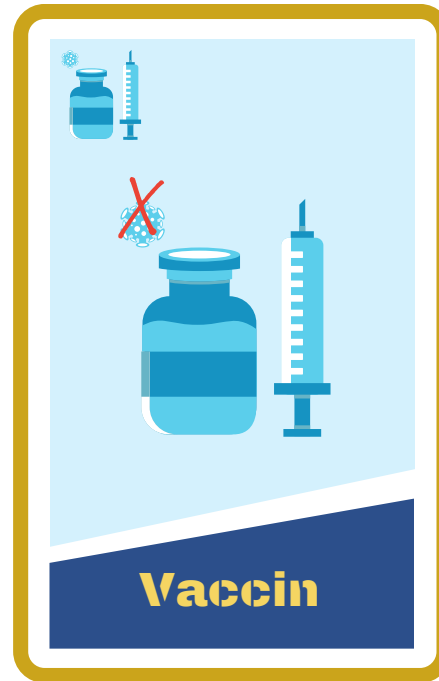




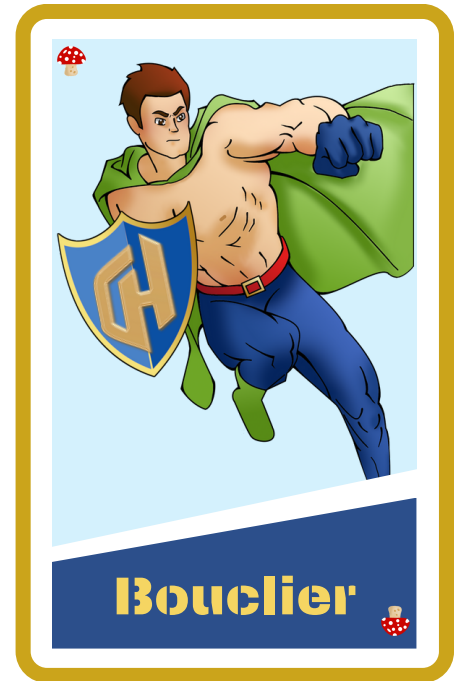
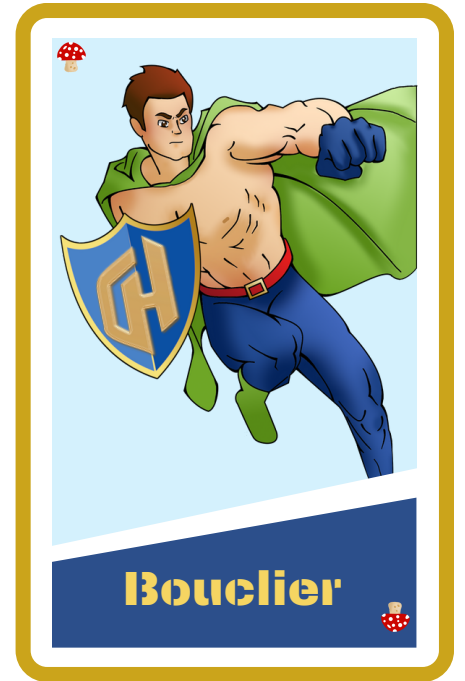
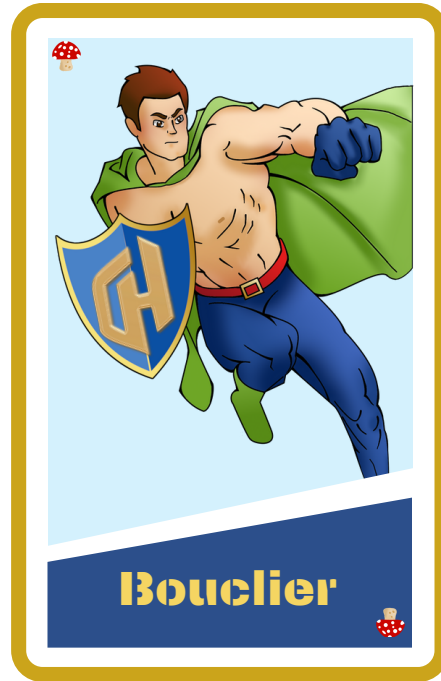
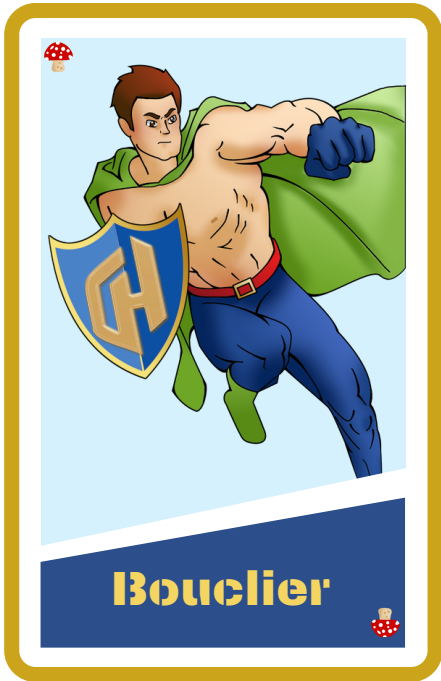


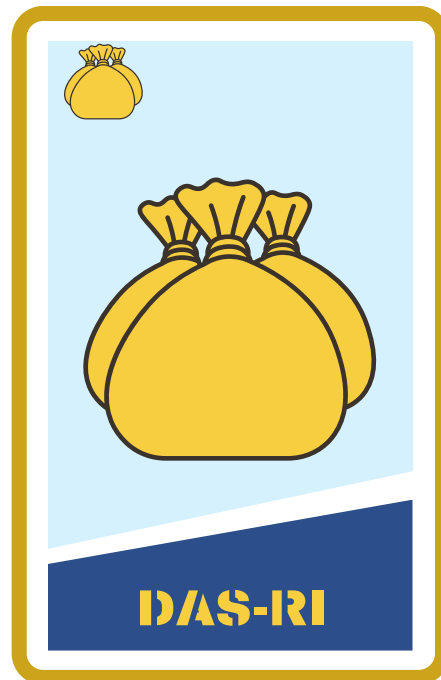


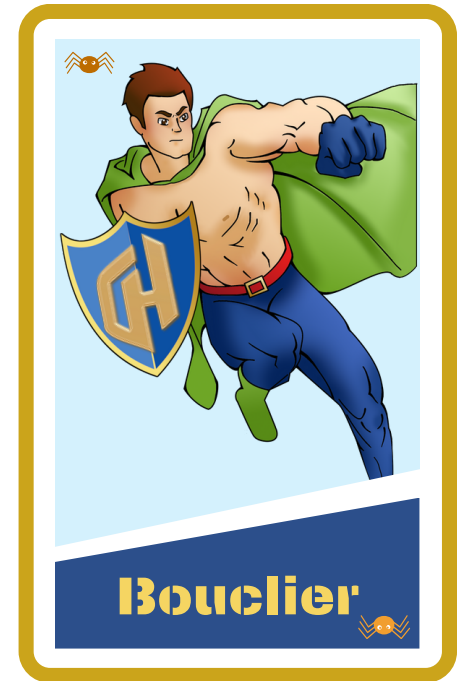
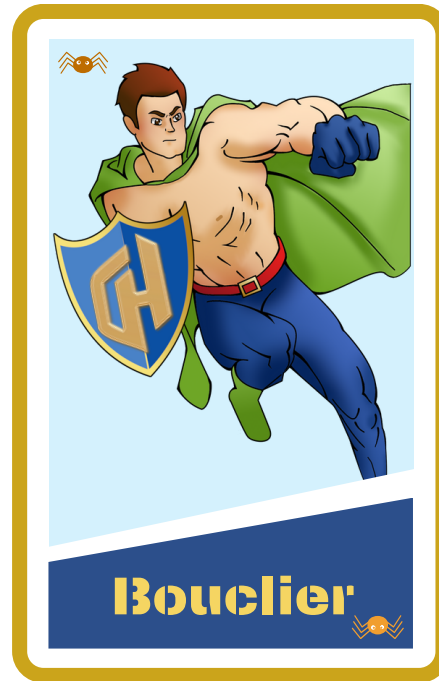
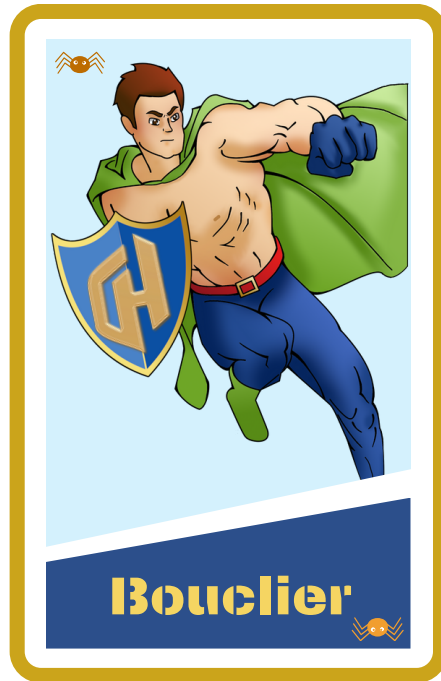
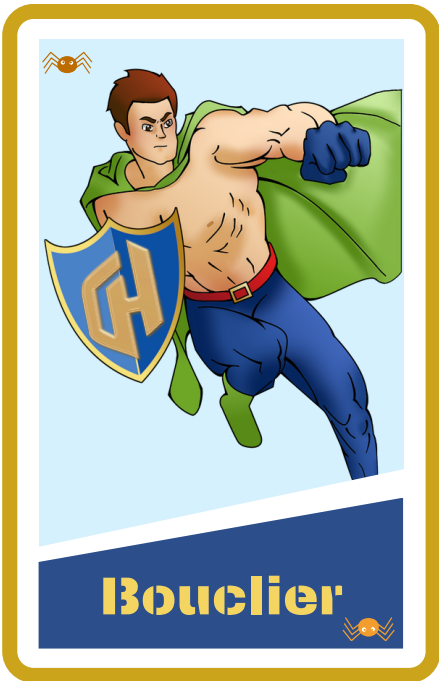
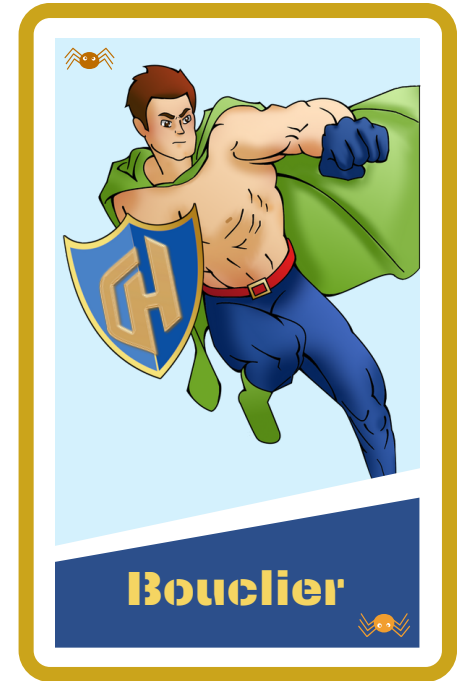
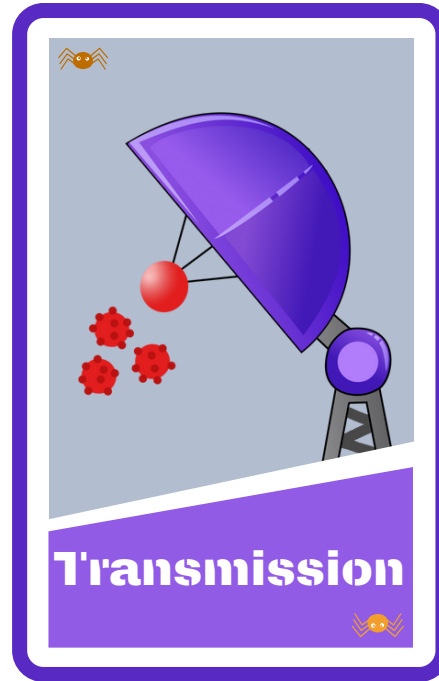
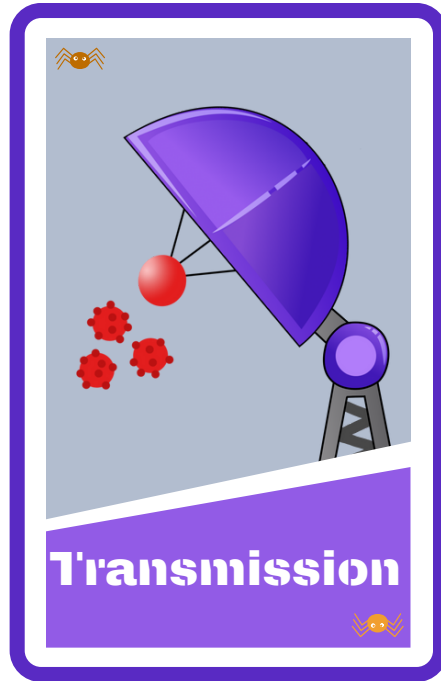
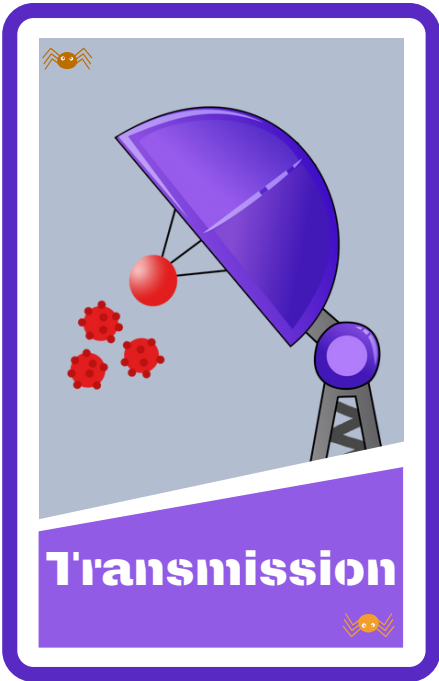


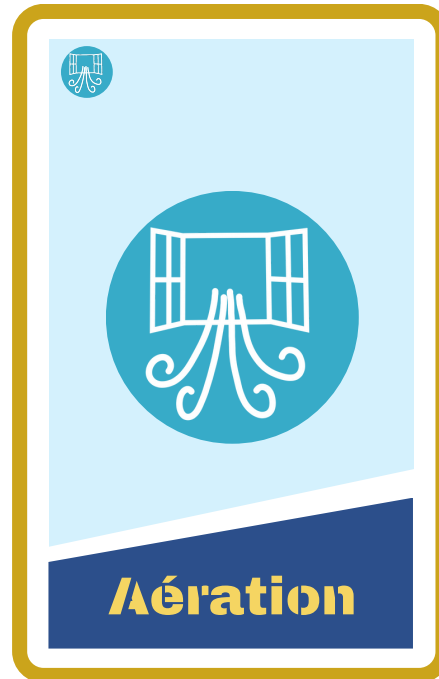


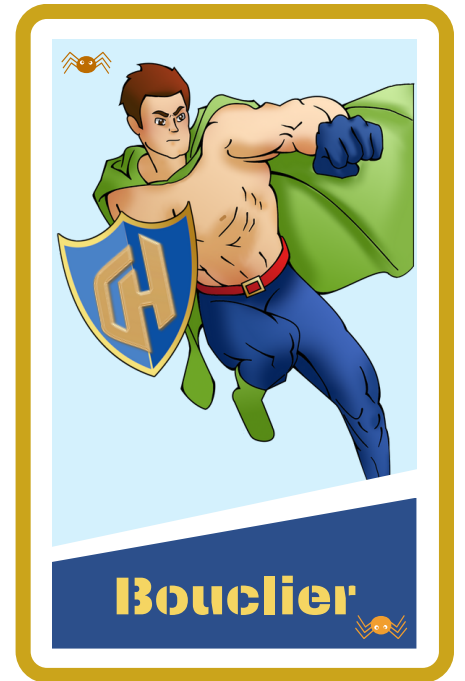
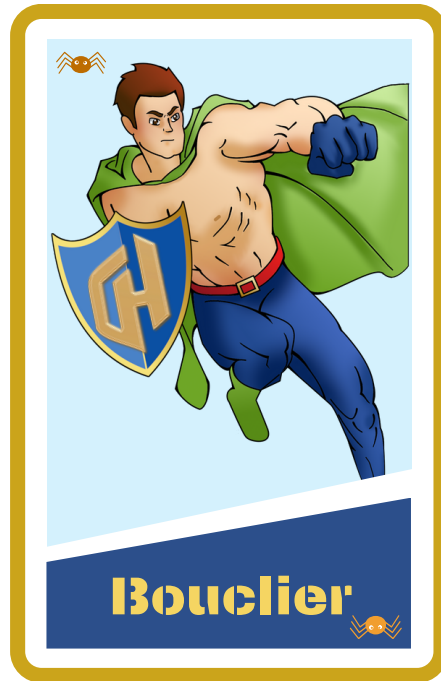
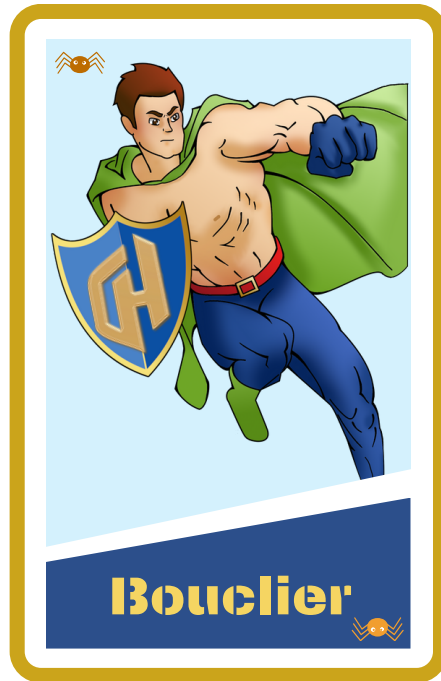
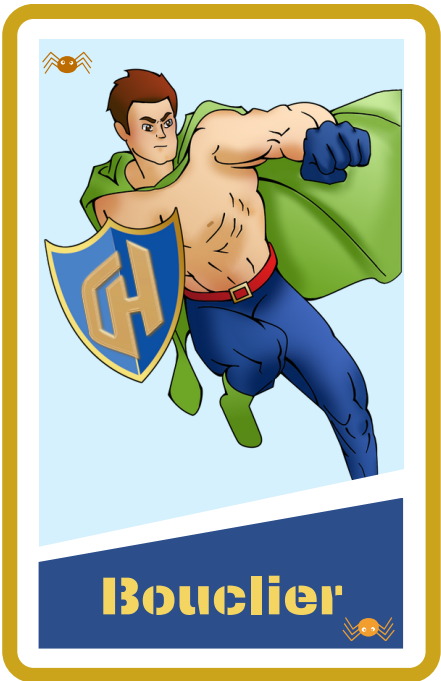
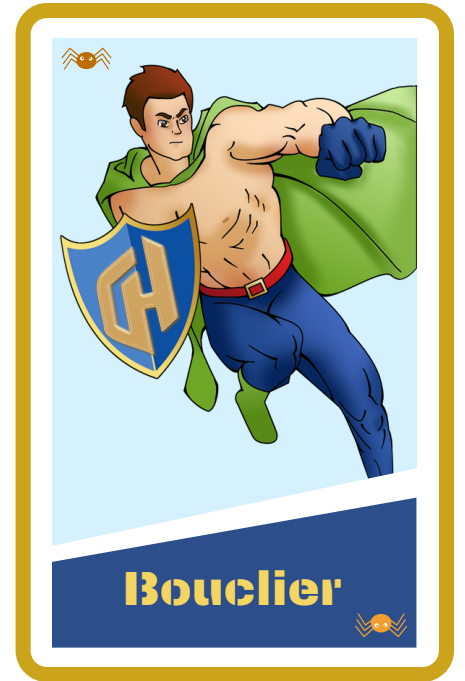
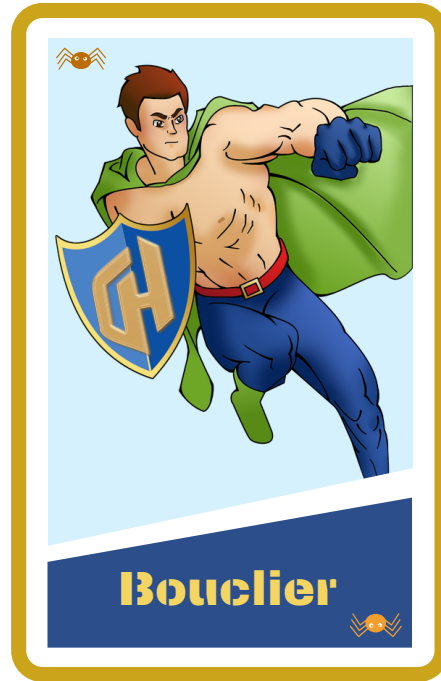
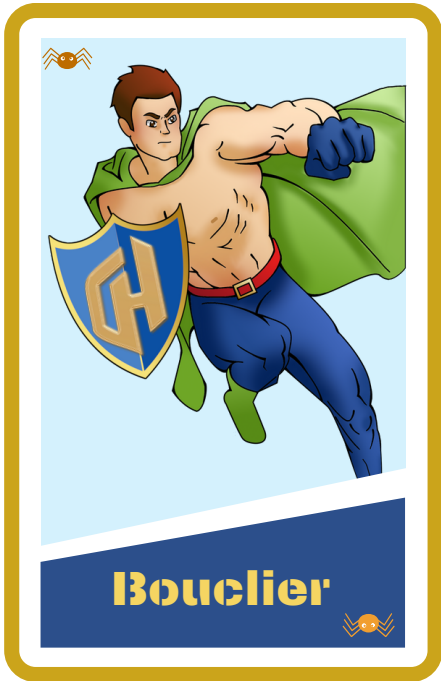


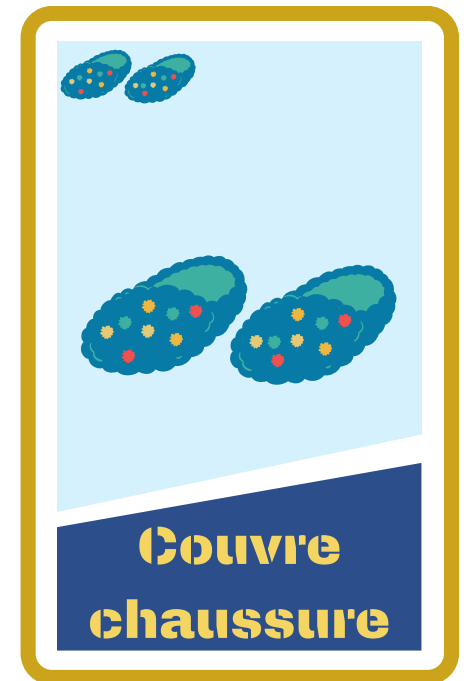
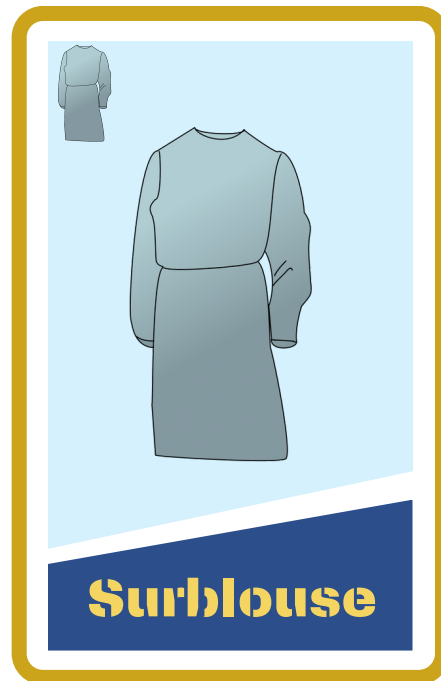
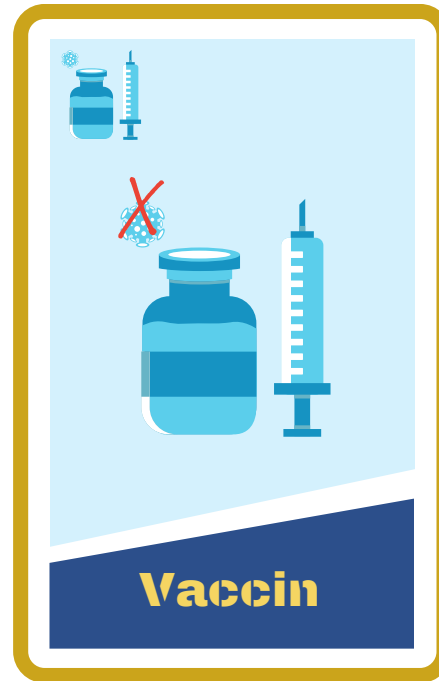


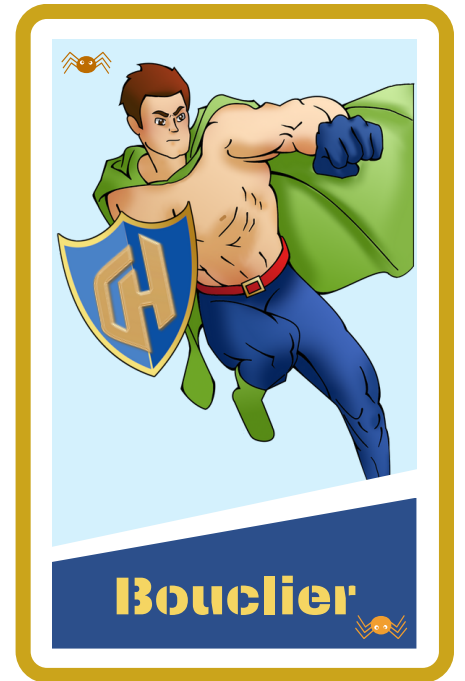
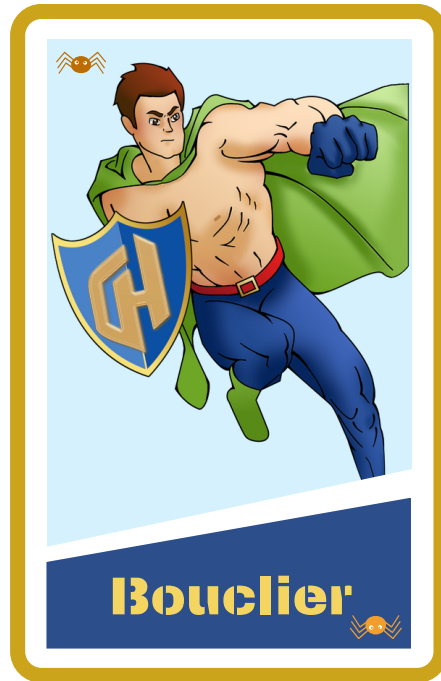
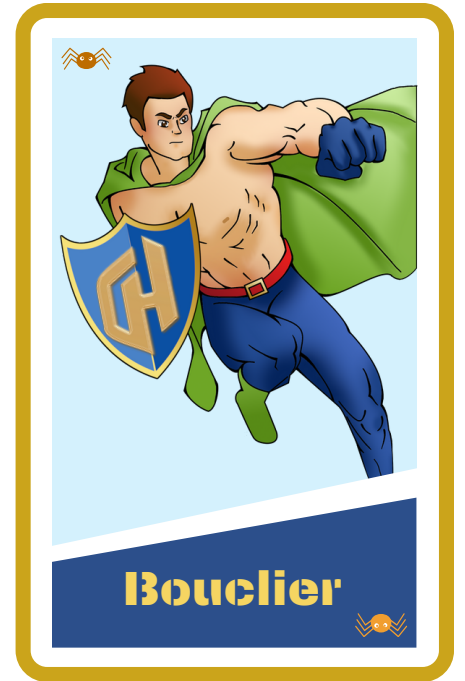
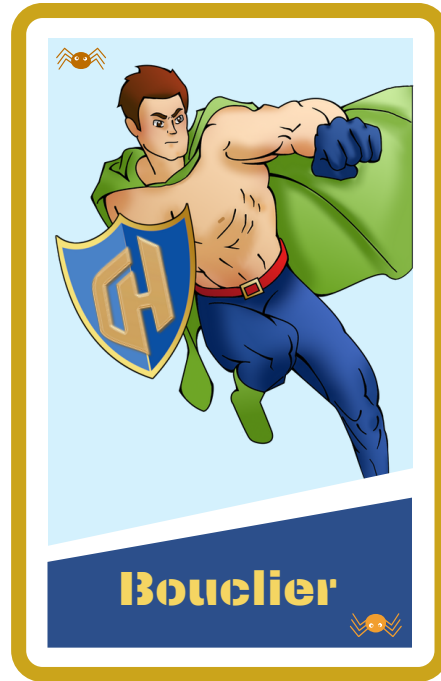
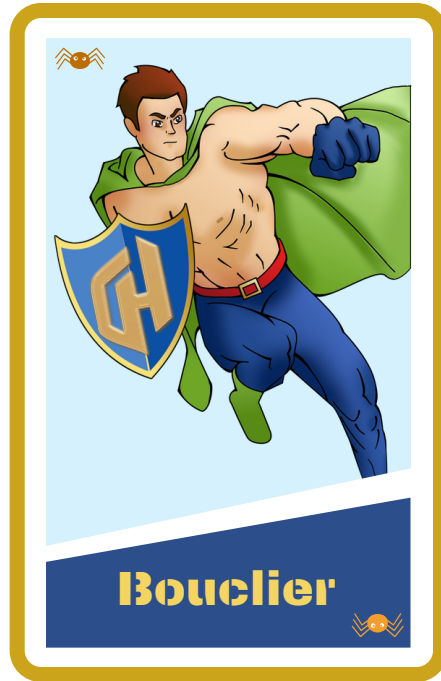
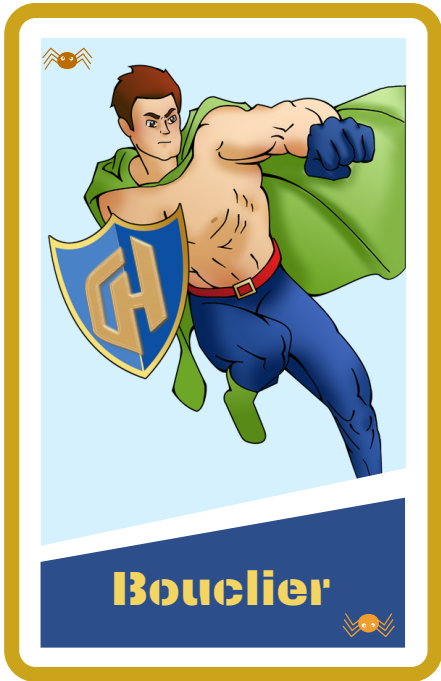






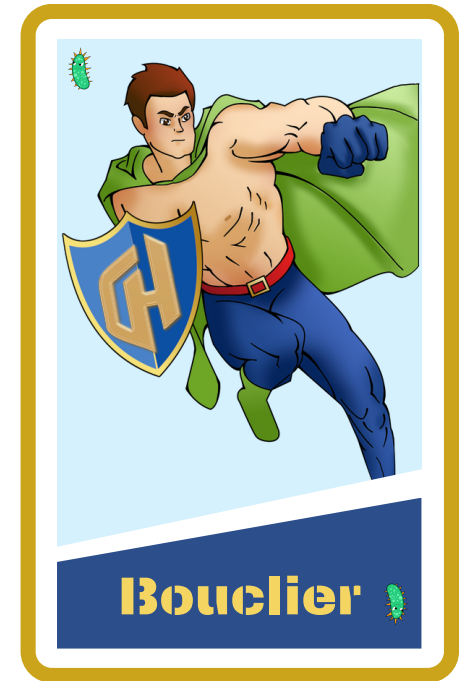
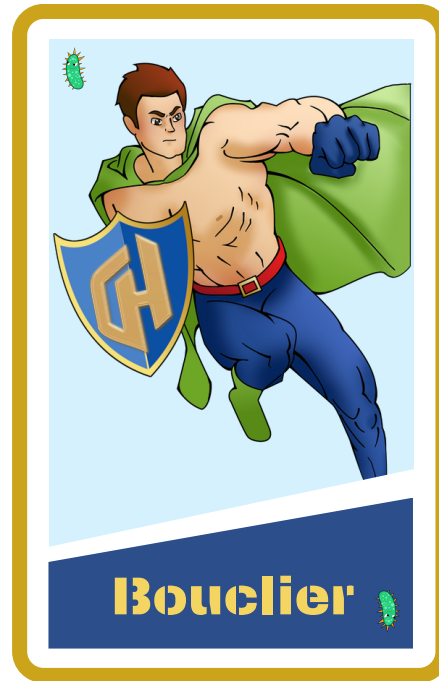
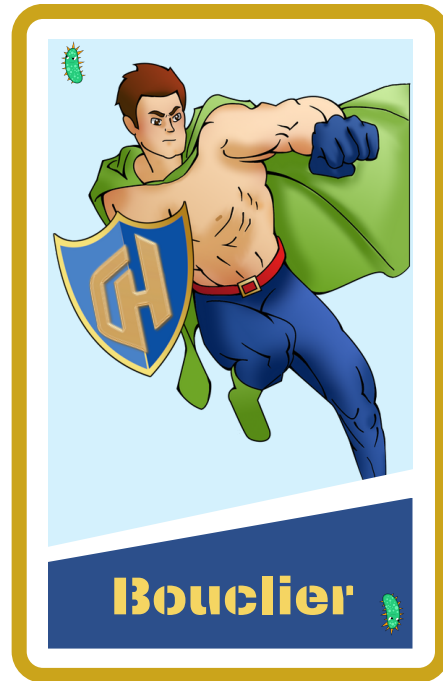
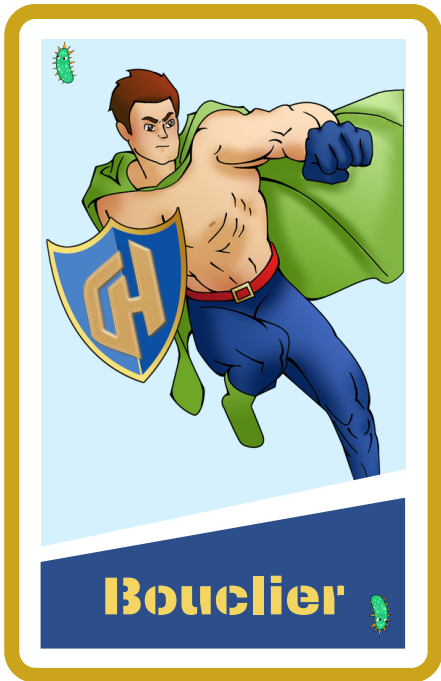
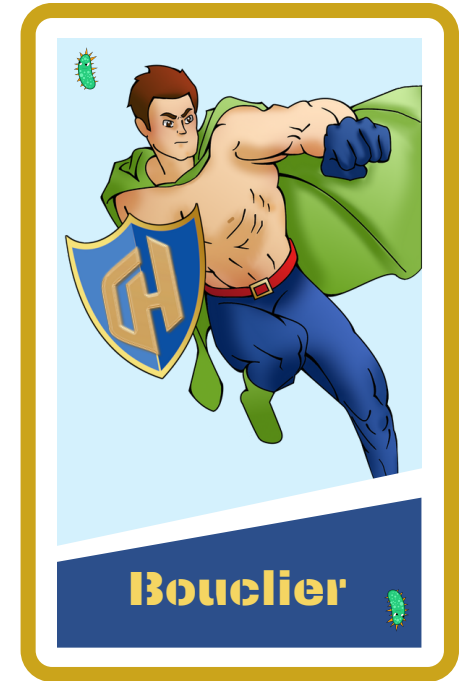
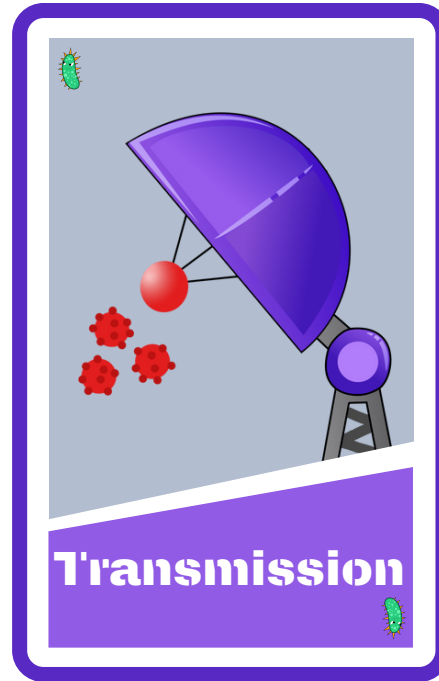
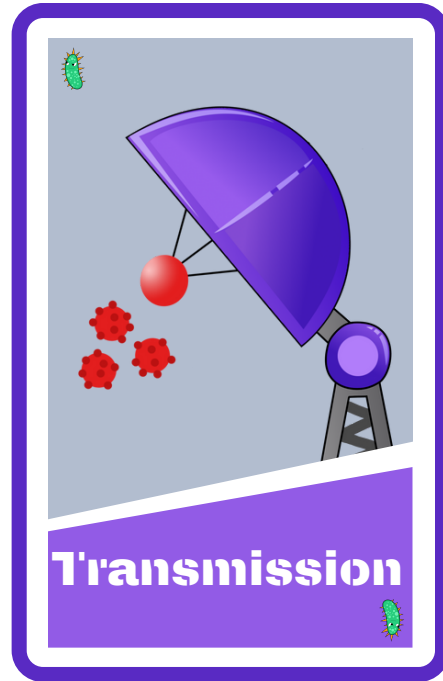
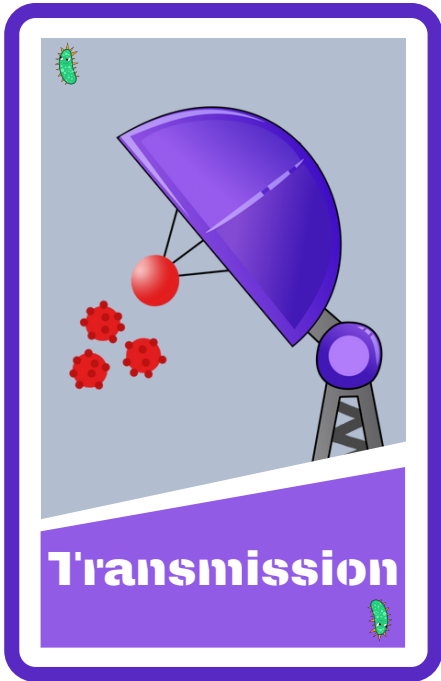


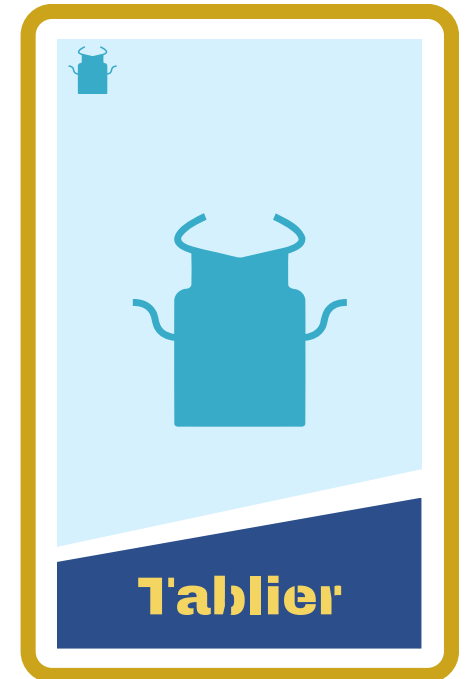
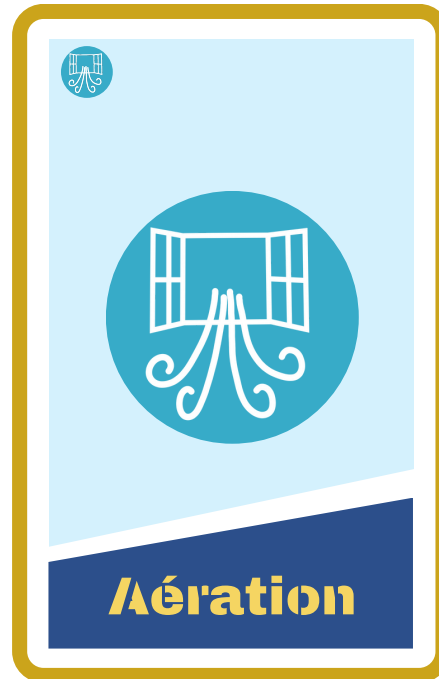


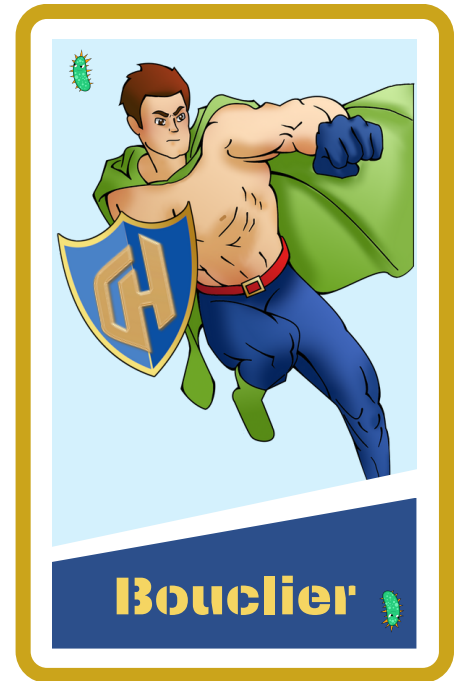
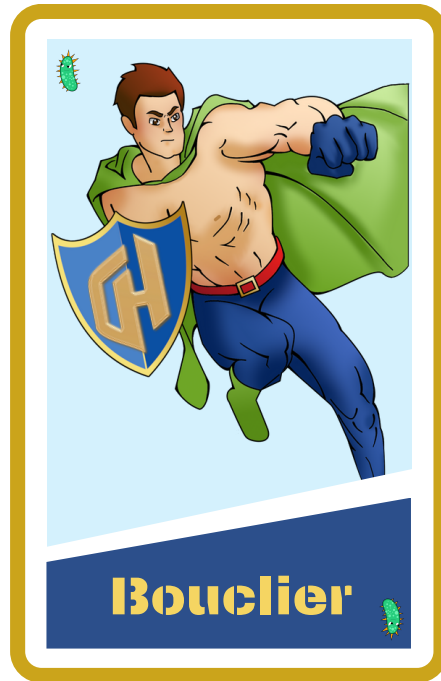
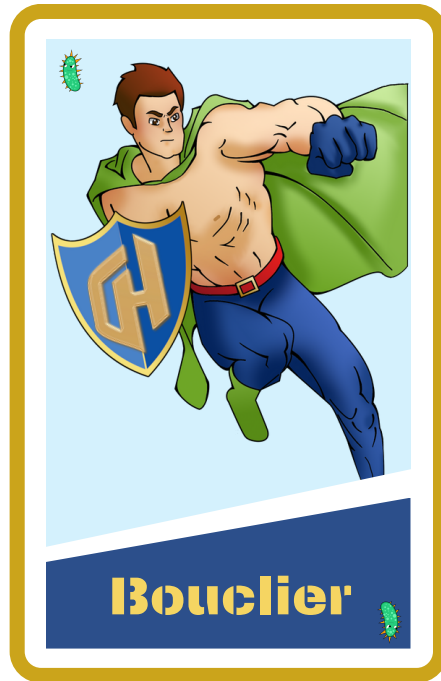
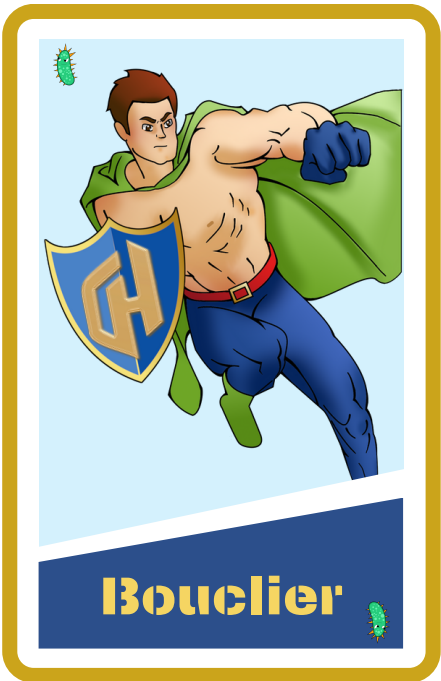
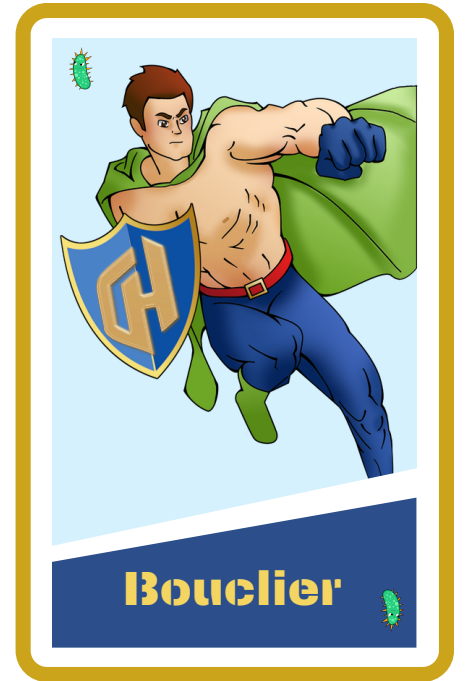
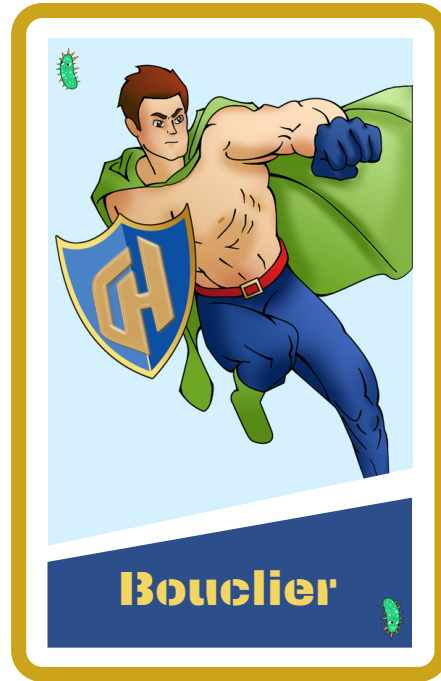
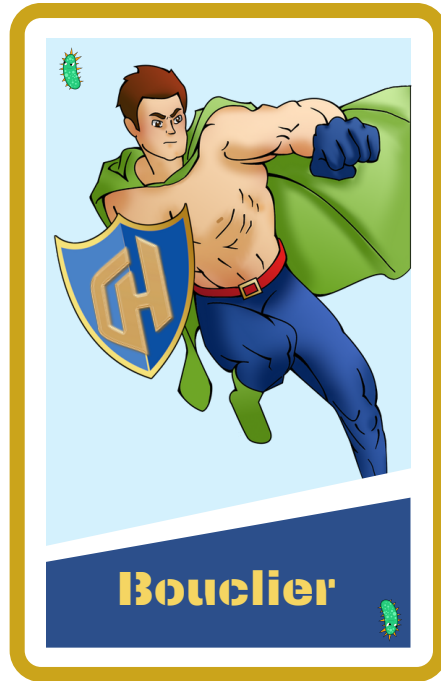
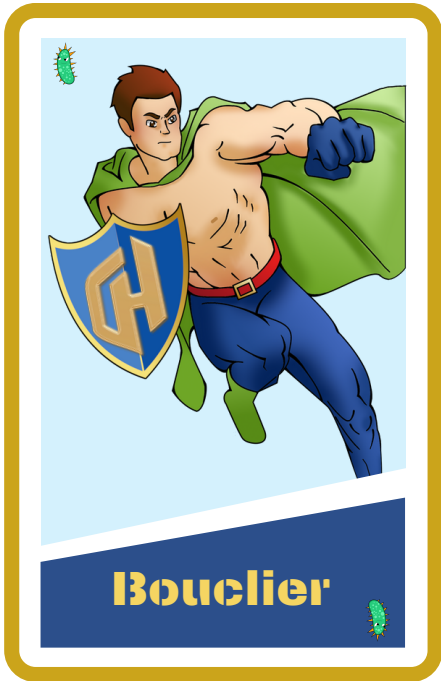


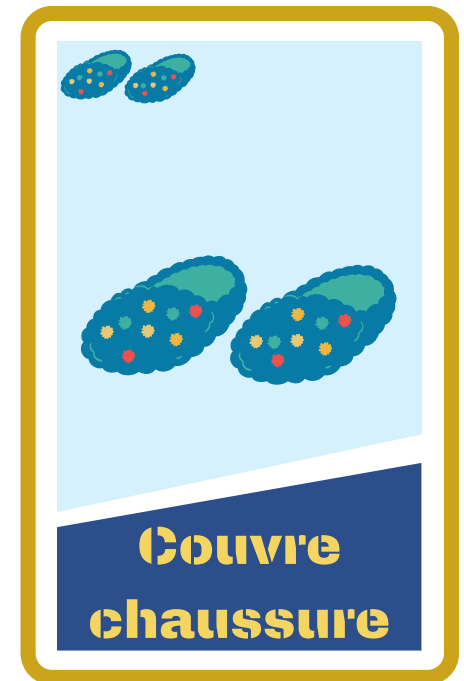
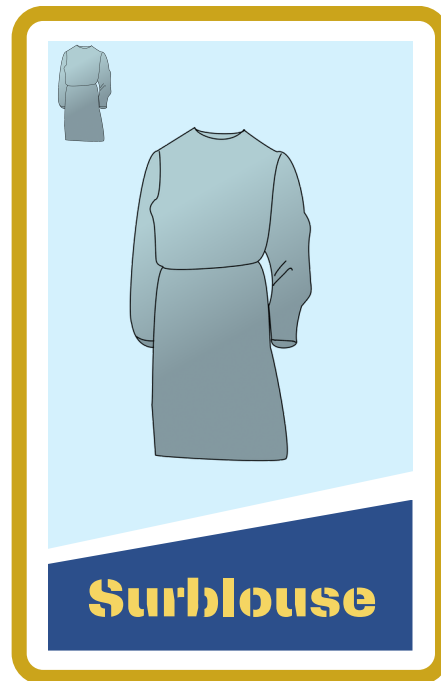
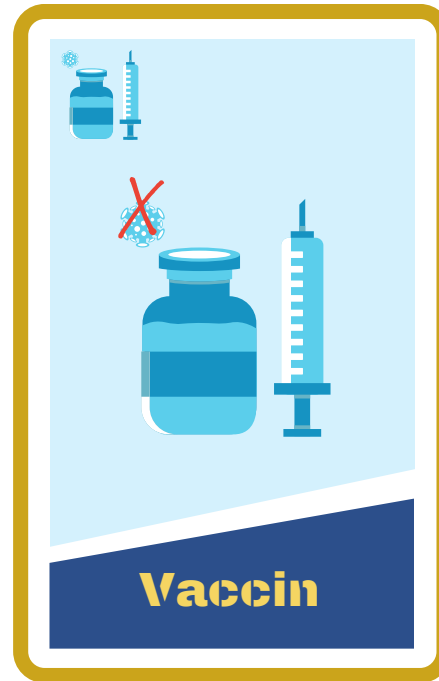


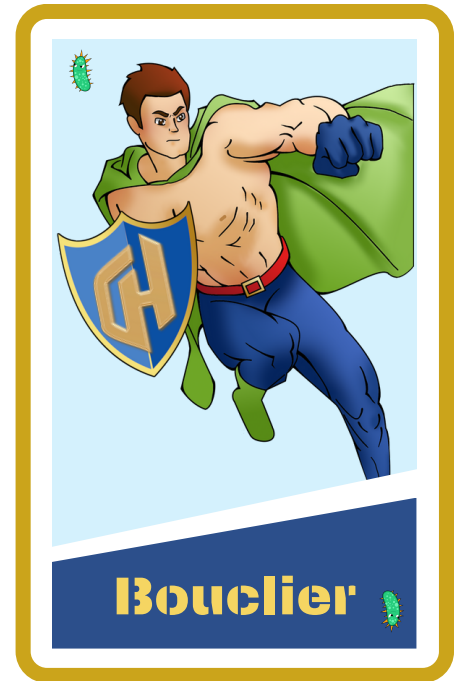
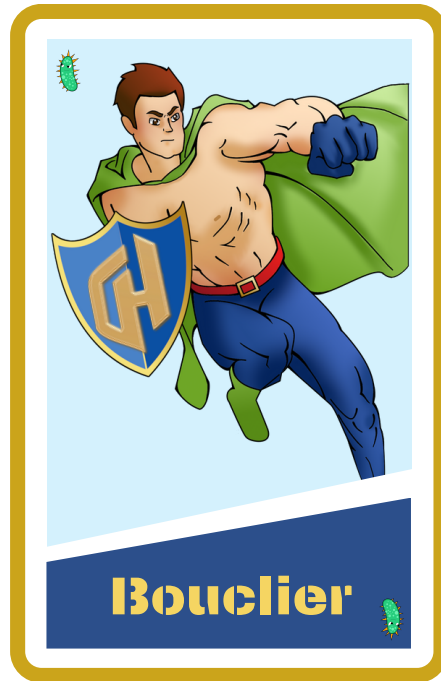
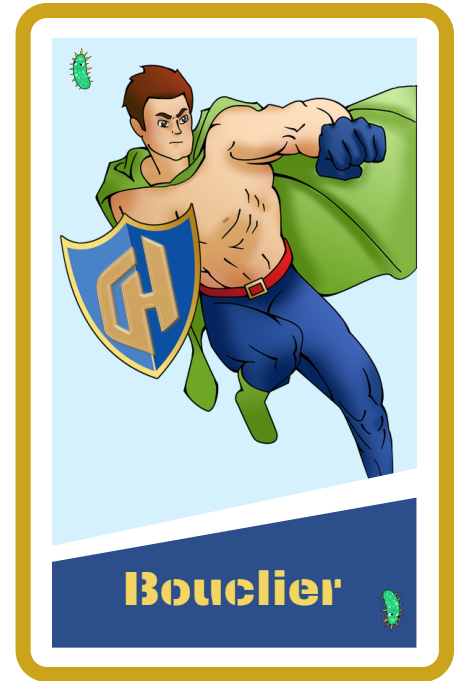
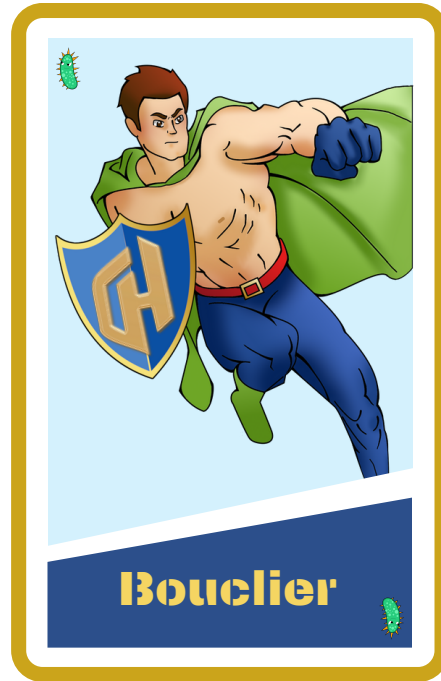
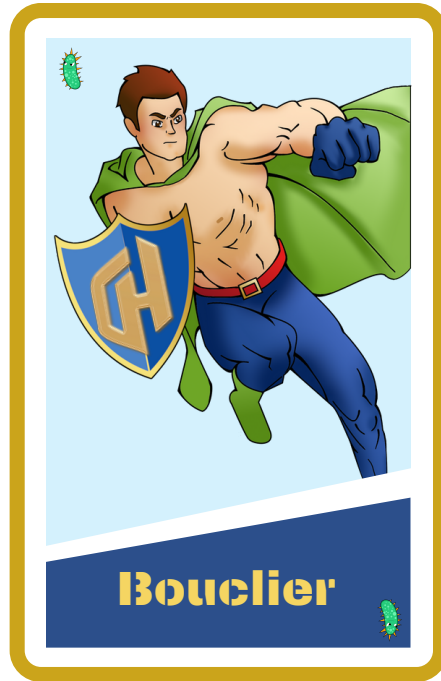
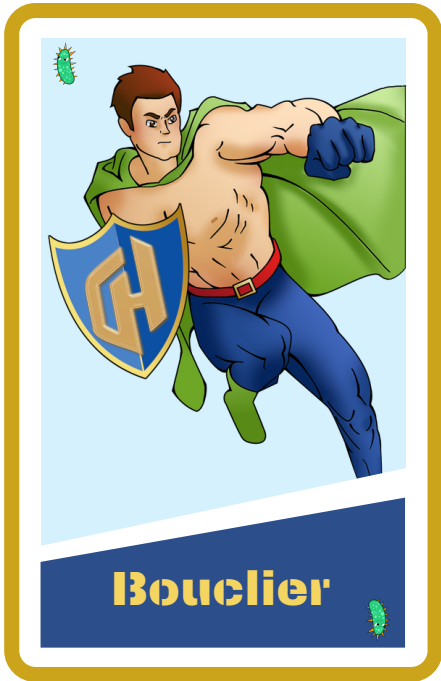


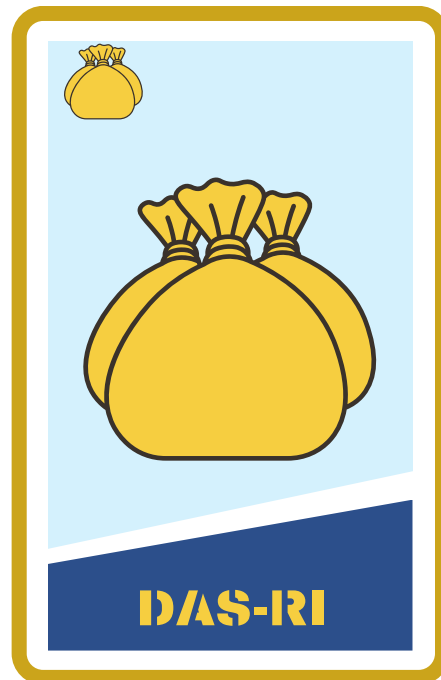


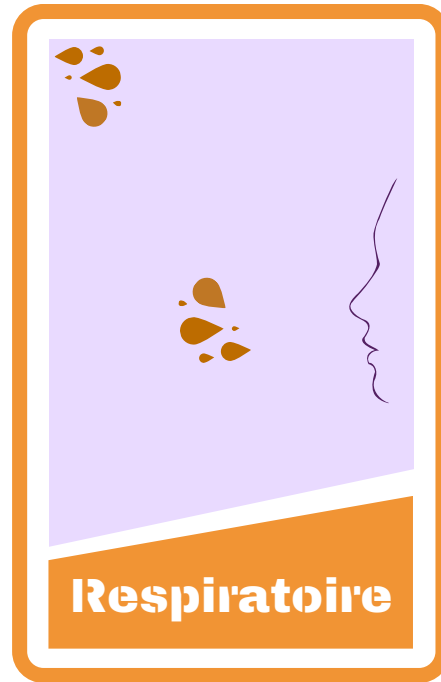












**Respiratoire**